



**HAMPDEN COUNTY SHERIFF'S DEPARTMENT
MICHAEL J. ASHE, JR.
SHERIFF**

HOUSE OF CORRECTION

RECIDIVISM REPORT

2012 & 2010 Releases

**Dr. Martha A. Lyman
Research Director**

**Michael Lupo
Classification Coordinator**

March 2014

EXECUTIVE SUMMARY

Section 1: 2012 Releases One Year Post Release

- Of the 1966 inmates released in 2012, **258 (13.1%) were re-incarcerated within one year for a new offense and 99 (5.0%) returned for a technical violation of parole or probation.** The new offense rate decreased from 14.3% the previous year. Technical violations, most of parole, increased from 3.1% in 2011.
- **The total reincarceration rate was 18.1%.**
- 34 individuals (12 women, 22 men) were incarcerated twice within the first year post release, a significant decrease from the previous year. Two men were reincarcerated three times.
- These chronic recidivists commit drug, property, domestic, motor vehicle or prostitution offenses, or violate probation or parole. Many have unaddressed substance abuse and/or mental health issues that perpetuate criminal behavior.
- Mean time to recidivate was 148 days, 6 days less than in 2011. Nearly 35% of new arraignments occurred within 90 days of release, and 65% occurred within 180 days of release.
- 271 individuals had new cases awaiting disposition at the end of the first year post release. Disposition of these cases will be reflected in the three-year follow up.

- **115 new arraignments were dismissed, nol pros (not prosecuted) or continued without a finding.**
- **219 men and 21 women had new restraining orders filed against them after their release.**
- **Many new arraignments lead to incarceration for violation of release conditions. This is particularly true for nonviolent offenses, which represented 67% of new arraignments, but only 45% of new incarcerations.**
- **36% of those serving time for a violent offense were arraigned for a new violent offense. This group continues to be overwhelmingly male, young (nearly 50% are under 30) with substance abuse, unemployment, criminal associates, mental health and poor family support the leading risk factors. 67% lack a high school diploma or GED.**
- **Median sentence for a new offense was 180 days, for a probation violation 270 days, and for a parole violation, 82 days. Parole violators received credit for almost 5,500 days on the street before revocation. Probationers on a split sentence do not receive credit, and must serve the entire suspended portion of their sentence for a violation.**
- **Those released from lower security have a significantly better outcome than those released from "behind the wall". Those released from lower security had 29% lower rates of incarceration for new crimes despite the fact that nearly 60% scored as medium to high risk to recidivate at intake.**

- **Day Reporting releases had higher rates of return for technical violation than for new crimes.**
- **Consistent with previous years, the majority of parole revocations were for reasons related to relapse. Positive urine test and program failure are the most common violations.**
- **Unemployment, substance abuse, criminal history and personal-emotional problems were the predominant risk factors for re-offending.**
- **Special Reentry Populations included 70 DOC and 26 Bureau of Prisons inmates. Only 1 DOC inmate was re-incarcerated within one year of release.**

Section II: 2010 Releases Three Years Post Release

- The 2010 release cohort is 13% smaller than the previous year at 1907.
- Three years post-release, 59.7% (1136) of offenders had been arraigned, 42.8% (814) had been convicted and **31.8% (605) had been incarcerated for a new crime. Another 8.9% (169) had been incarcerated for a technical violation of probation or parole** (most in the first year).
- **The total three-year reincarceration rate for 2010 releases is 40.7%.**
- Rates of re-offending drop off significantly in the second and third year post-release. 68% of new arraignments occurred in the first year post release, another 22% in the second year and 11% in the third year.
- Participants in WMCAC, Minimum/PRC and Day Reporting commit significantly fewer new offenses than those released from other security levels.
- While the overall reincarceration rate was higher for those who were paroled (46.5%) than for those who completed their sentence (38.7%), only 23% of parolees committed a new offense compared to 34.5% of those who wrapped up their sentence. The majority of parolees return for violation of their release conditions.
- Arraignment, conviction and incarceration rates are at an eight-year low. Three years after release, over 40% of 2010 releases remained crime-free, and 68% had not been reincarcerated for a new crime.

TABLE OF CONTENTS

| | |
|-------------------------------------|------|
| Executive Summary | ii-v |
| Table of Contents | vi |
| Methodology | 1 |
| Overview of 2012 Release Population | 2 |

Section I - One-Year Recidivism Rates - 2012 Releases

| | |
|----------------------------------|------|
| Tables and Charts | |
| Recidivism Overview | 5 |
| Time to Arraignment | 6 |
| Other Activity | 6 |
| Disposition of New Cases | 7 |
| Offense Types | 8-10 |
| New Sentence | 11 |
| Rates by Security Level & Class | 12 |
| Violations of Release Conditions | 13 |
| Parole Revocations | 14 |
| Special Reentry Populations | 15 |

Section II - Three-Year Recidivism Rates - 2010 Releases

| | |
|-------------------------|-------|
| Tables and Charts | |
| Recidivism Overview | 17-18 |
| Rates by Classification | 19 |
| Rates by Release Type | 20 |
| Offense Types | 21-23 |

Section III - Recidivism Summary - 2001-2012

| | |
|--|-------|
| Lower Security Releases & One-Year Rates | 25 |
| New Offense & Technical Rates 2001-2012 | 27-29 |
| Three-Year Rates 2002-2010 | 30-31 |

METHODOLOGY

Lists of individuals released from the House of Correction are drawn monthly from the facility's Jail Management System (JMS). Offenders not released to the street (transferred to other institutions or returned to pretrial status for new charges) are deleted. Edited lists are produced from which official criminal records (BOPs) are run and processed. Any activity within the criminal court system in Massachusetts is recorded.

Recidivism is reported along four dimensions:

- **New Arraignment** –arraignment in any Massachusetts court for *new offense*.
- **New Conviction** – any guilty finding on a *new case*. Dispositions range from guilty-filed to commitment.
- **New Incarceration** – sentence of any length to a federal, state or county correctional facility in Massachusetts for a *new offense*.
- **Technical Violation** - return to custody for violation of either parole or probation for any reason other than a new offense.

Several data sources are utilized in preparing the recidivism report. Information relative to gender, race, age, residence, current charges, sentence, release type and classification are obtained from JMS. Parole violations are tracked through JMS and the Notice of Preliminary Hearing (Form A) from the Institutional Parole Office. Data on probation violations are recorded from the BOP.

OVERVIEW OF THE 2012 RELEASE COHORT

- **During 2012, 1966 sentenced offenders were released to the street. This represented an increase of 248 (14.4%) from the previous year, primarily due to the increase in Worcester county women held at the WCC.**
- **Of those released, 21% (407) were females and 79% (1559) were males. Two males were reported deceased during the first year post-release and have been removed from the cohort.**
- **13% (260) were paroled and 87% (1706) were released via expiration of sentence or payment of fines ("wrapped"). Parolees served 55% of their sentence; those who wrapped served 76%.**
- **50% (203) of females and 59% (914) of males were previous recidivists by virtue of having at least one prior adult incarceration.**
- **Of those serving their first adult incarceration, 36% (305) had a previous juvenile record.**
- **Female releases ranged in age from 19 to 71 years of age. The most common age was 31. Males ranged from 18 to 87 years; the most common age was 22.**
- **Over 7% of the females released were African American, 17% were Hispanic and 75% were Caucasian. Of the male releases, 20% were African American, 41% were Hispanic and 39% were Caucasian.**

- **The breakdown of security level at time of release was as follows: Medium/Maximum 40%, Minimum/PRC12%, Community Reentry Unit (CRU) 18%, WMCAC 19% and Day Reporting 11%.**
- **The 2012 release cohort included 70 DOC reentry inmates (11 females, 59 males) and 26 Bureau of Prison inmates (2 females, 24 males). 85 (89%) were released from lower security.**
- **67% (1317) of those released served time for a nonviolent offense (property, drugs, MV, prostitution, other), 29% (568) for a violent offense (crime against a person, domestic violence, sex offense, firearms), and 4% (77) for violation of parole or probation.**
- **29% served a sentence of 90 days or less, 28% between 90 and 180 days, 11% between 180 and 364 days, and 33% a year or more.**
- **232 individuals served sentences part or all of which were mandatory. These mandatory sentences accrued 80,305 bed-days, over 27,000 for drug offenses.**
- **41% of those released were from Springfield, 12% from Holyoke, 8% from Chicopee, 14% from other Hampden County towns, 20% from other counties and 3% from out of state. 46 individuals provided no address at booking.**

SECTION ONE

2012 RELEASES

ONE-YEAR RECIDIVISM RATES

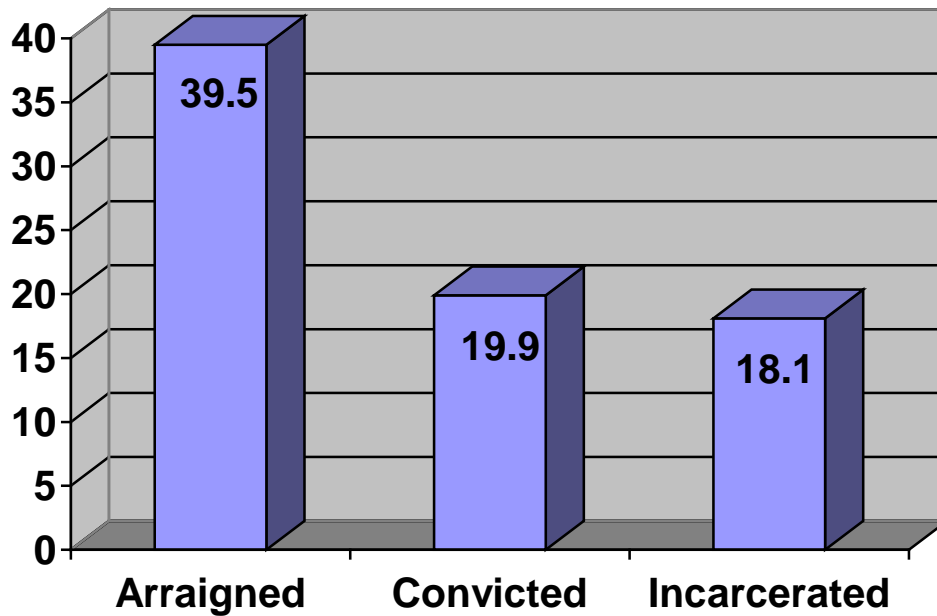
**SECTION I
ONE-YEAR RECIDIVISM RATES
2012 RELEASES**

Recidivism Type (% of Total Releases)

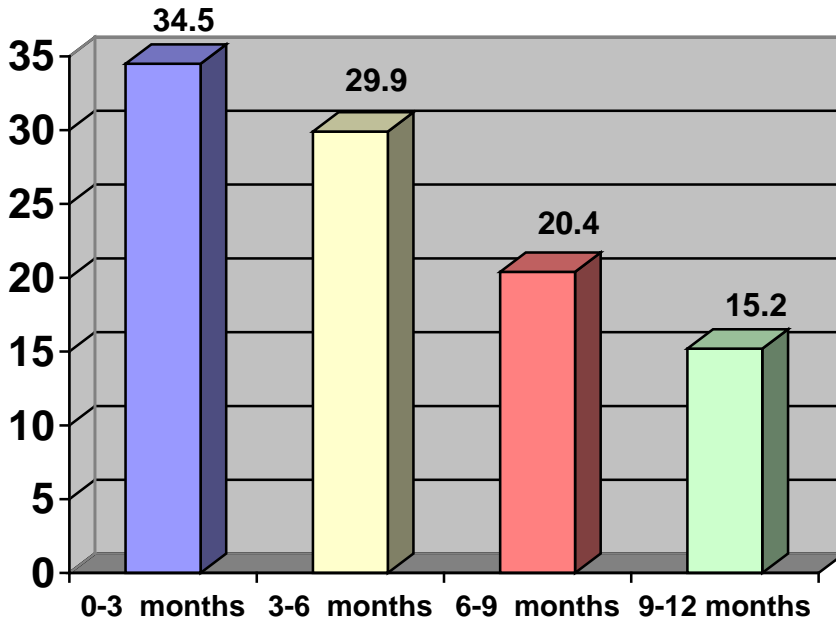
| | Females | | Males | | Total | |
|----------------------------|---------|------|-------|------|-------|------|
| | N | % | N | % | N | % |
| New Offense | | | | | | |
| Arraignment | 166 | 40.8 | 611 | 39.2 | 777 | 39.5 |
| Conviction | 92 | 22.6 | 299 | 19.2 | 391 | 19.9 |
| Incarceration | 47 | 11.5 | 211 | 13.5 | 258 | 13.1 |
| Technical Violation | 20 | 4.9 | 79 | 5.1 | 99 | 5.0 |

The incarceration rate for a new offense decreased from 14.3% to 13.1%. An additional 5% returned for a technical violation of parole or probation. The total reincarceration rate of 18.1% is up slightly from the previous year.

One-Year Recidivism Rates



**Time to New Arraignment
(% of New Arraignments)**



Nearly 35% of new arraignments continue to occur within 90 days of release, and 65% within 180 days of release. Mean time to recidivate was 148 days.

| Other Activity | Females | | Males | |
|-----------------------|----------------|----------|--------------|----------|
| | N | % | N | % |
| Open Cases-New | 55 | 13.5 | 216 | 13.9 |
| Open Cases-Existing | 121 | 29.7 | 724 | 46.4 |
| Open Warrants | 44 | 10.8 | 112 | 7.2 |
| New Restraining Order | 21 | 5.2 | 219 | 14.0 |

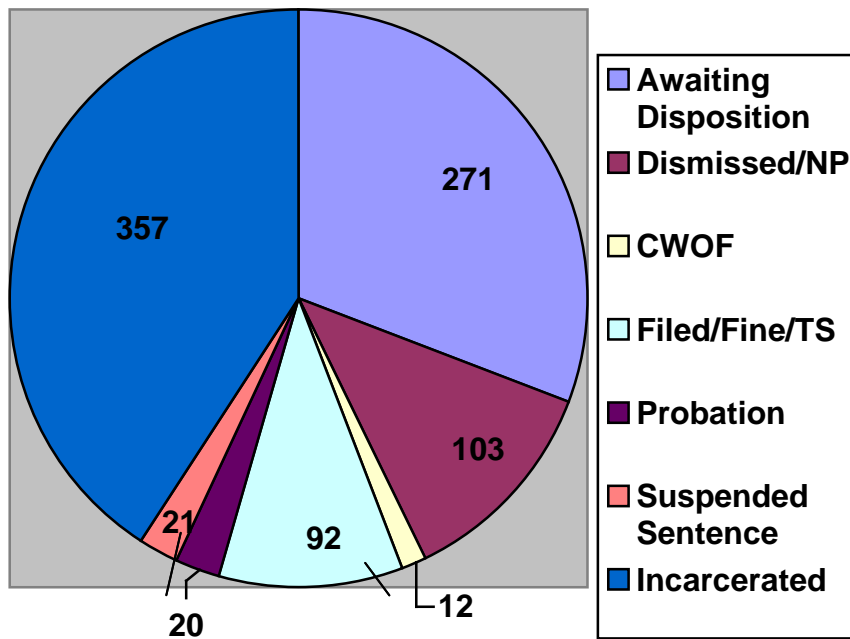
Most existing cases remain open for a period of probation supervision.

Disposition of New Cases

| | Females N | Males N |
|-----------------------|--------------|------------|
| Awaiting Disposition | 55 | 216 |
| Dismissed | 14 | 67 |
| Nol Pros | 3 | 19 |
| Continued W/O Finding | 2 | 10 |
| Fined/Filed | 33 | 59 |
| Probation | 9 | 11 |
| Suspended Sentence | 3 | 18 |
| Committed | 67 | 290 |

271 individuals had new cases awaiting disposition at the end of their first year post release. Disposition of these cases will be reflected in the three-year follow up.

Disposition of New Cases



New Offense (% of New Arraignments)

| | Females | | Males | |
|---------------------------------|------------|-------------|------------|-------------|
| | N | % | N | % |
| Person | 20 | 10.8 | 124 | 18.0 |
| Domestic | 1 | 0.5 | 23 | 3.3 |
| Sex Offense | 0 | 0.0 | 9 | 1.3 |
| Firearms | 0 | 0.0 | 15 | 2.2 |
| Total Violent Offenses | 21 | 11.3 | 171 | 24.8 |
| Property | 61 | 32.8 | 176 | 25.5 |
| Drugs | 29 | 15.6 | 113 | 16.4 |
| MV | 22 | 11.8 | 138 | 20.0 |
| Prostitution | 22 | 11.8 | 2 | 0.3 |
| Other | 11 | 5.9 | 11 | 1.6 |
| Total Nonviolent Offense | 145 | 77.9 | 440 | 63.8 |
| Parole Violation | 14 | 7.5 | 61 | 8.8 |
| Probation Violation | 6 | 3.2 | 18 | 2.6 |
| Total Tech. Violations | 20 | 10.7 | 79 | 11.4 |

| <u>Original Offense Type</u> | <u>New Offense Type</u> | | | |
|------------------------------|-------------------------|-------------|------------|-------------|
| | Violent | | Nonviolent | |
| | N | % | N | % |
| Violent | 100 | 36.0 | 178 | 64.0 |
| Nonviolent | 92 | 15.4 | 506 | 84.6 |

100 violent offenders (93 men and 7 women) were arraigned for a new violent offense. This group continues to be overwhelmingly young minority males who score as high risk, with substance abuse, unemployment, criminal associates, mental health and poor family support the leading risk factors. 67% lack a high school diploma or GED.

Fifty-five were released from the Main Institution, 31 from the Community Re-entry Unit, 8 from WMCAC and 6 from MIN/PRC.

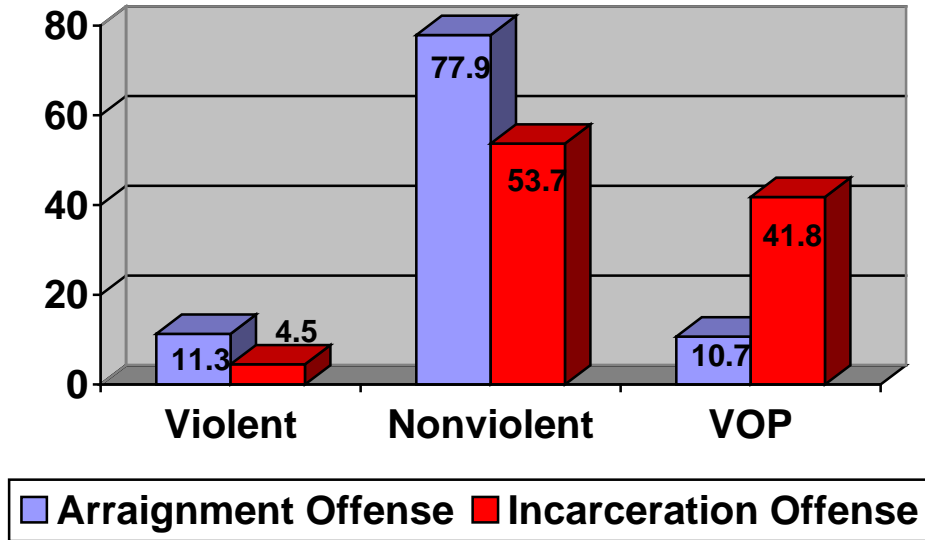
New Incarceration Offense (% of New Incarcerations)

| | Females | | Males | |
|---------------------------------|-----------|-------------|------------|-------------|
| | N | % | N | % |
| Person | 3 | 4.5 | 34 | 11.7 |
| Domestic | 0 | 0.0 | 8 | 2.8 |
| Sex Offense | 0 | 0.0 | 0 | 0.0 |
| Firearms | 0 | 0.0 | 5 | 1.7 |
| Total Violent Offenses | 3 | 4.5 | 47 | 16.2 |
| Property | 14 | 20.9 | 81 | 27.9 |
| Drugs | 9 | 13.4 | 30 | 10.3 |
| MV | 6 | 9.0 | 14 | 4.8 |
| Prostitution | 7 | 10.4 | 0 | 0.0 |
| Other | 0 | 0.0 | 1 | 0.3 |
| Total Nonviolent Offense | 36 | 53.7 | 126 | 43.3 |
| Parole Violation | 16 | 23.9 | 67 | 23.1 |
| Probation Violation | 12 | 17.9 | 50 | 17.2 |
| Total Violations | 28 | 41.8 | 117 | 40.3 |

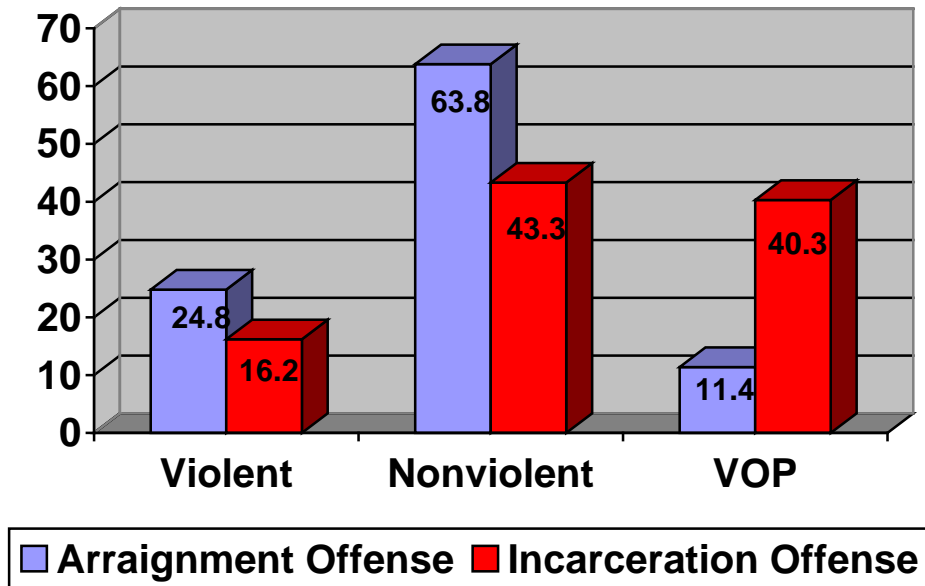
The first offense for which an individual is arraigned is often not what leads to a new incarceration, instead, a new arraignment often leads to violation of probation or parole. This is particularly true of nonviolent offenses, which account for 67% of new arraignments, but only 45% of incarcerations.

40% of men and 42% of women are re-incarcerated for violating parole or probation.

Arrestment & Incarceration Offenses Females



Arrestment & Incarceration Offenses Males



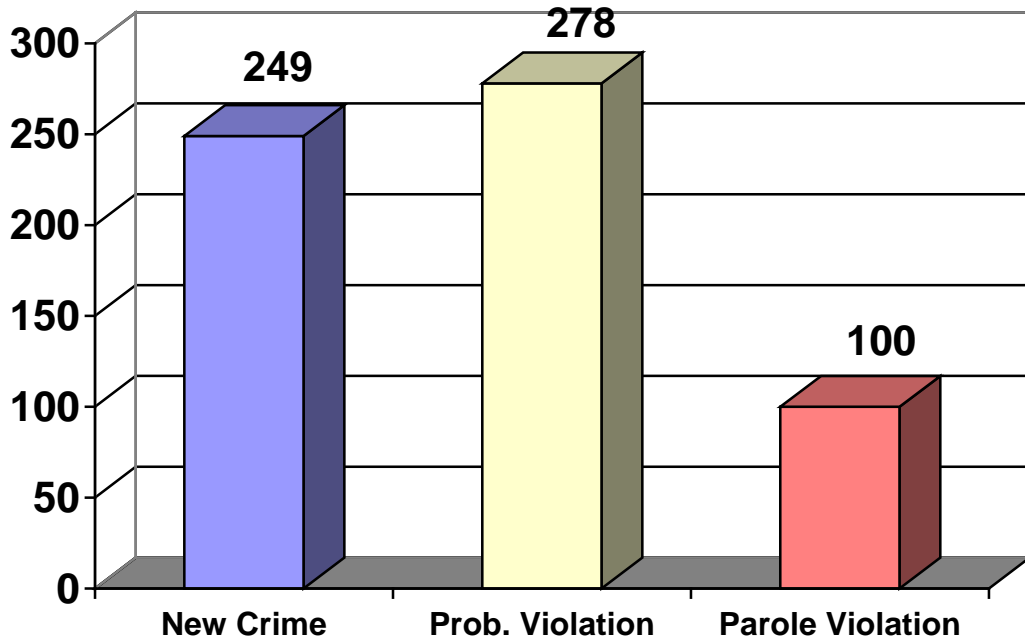
New Sentence (Days)

| | <u>New Offense</u> | <u>Probation Technical</u> | <u>Parole Technical</u> | <u>All</u> |
|---------|--------------------|----------------------------|-------------------------|------------|
| Mean | 249 | 278 | 100 | 226 |
| Median | 180 | 270 | 82 | 169 |
| Minimum | 4 | 10 | 10 | 4 |
| Maximum | 3690 | 730 | 449 | 3690 |

Mean sentence length can be skewed by one extreme value therefore it is more accurate to use the *median* when making comparisons to the previous year. Median sentence for a new offense was 180 days, for a technical violation of probation was 270 days. The parole median increased from 53 to 82 days.

Because parolees receive credit for time on the street, the amount of time they must serve after revocation is much shorter than for probationers. The 70 technical parole violators had 6,923 days to serve after revocation, while only 24 technical probation violators tallied 6,665 days. Parole violators received credit for 5,476 days on the street prior to revocation.

Mean New Sentence in Days

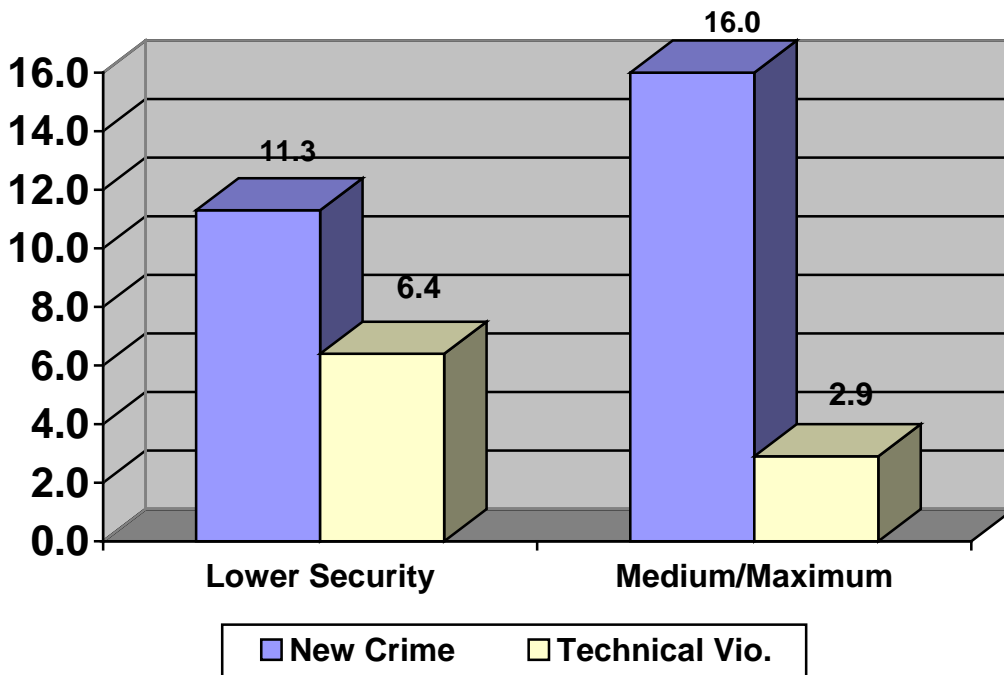


Incarceration Rates by Security Level at Release & Type of Return

| | Technical | | New Offense | | Total | |
|-----------------------------|-----------|------------|-------------|-------------|------------|-------------|
| | N | % | N | % | N | % |
| Day Reporting (215) | 24 | 11.2 | 13 | 6.0 | 37 | 17.2 |
| Minimum (172) | 16 | 9.3 | 20 | 11.6 | 36 | 20.9 |
| Pre/Work Release (64) | 2 | 3.1 | 7 | 10.9 | 9 | 14.1 |
| CRU (351) | 5 | 1.4 | 58 | 16.5 | 63 | 17.9 |
| WMCAC (376) | 28 | 7.5 | 35 | 9.3 | 63 | 16.8 |
| Lower Security Total | 75 | 6.4 | 133 | 11.3 | 208 | 17.7 |
| Medium Gen Pop (358) | 12 | 3.4 | 46 | 12.8 | 58 | 16.2 |
| Medium-Reentry (362) | 10 | 2.8 | 64 | 17.6 | 74 | 20.4 |
| Maximum (68) | 1 | 1.5 | 16 | 23.5 | 17 | 25.0 |
| Medium/Maximum | 23 | 2.9 | 126 | 16.0 | 149 | 18.9 |

Note: DOC, BOP & Probates are included in security level at time of release.

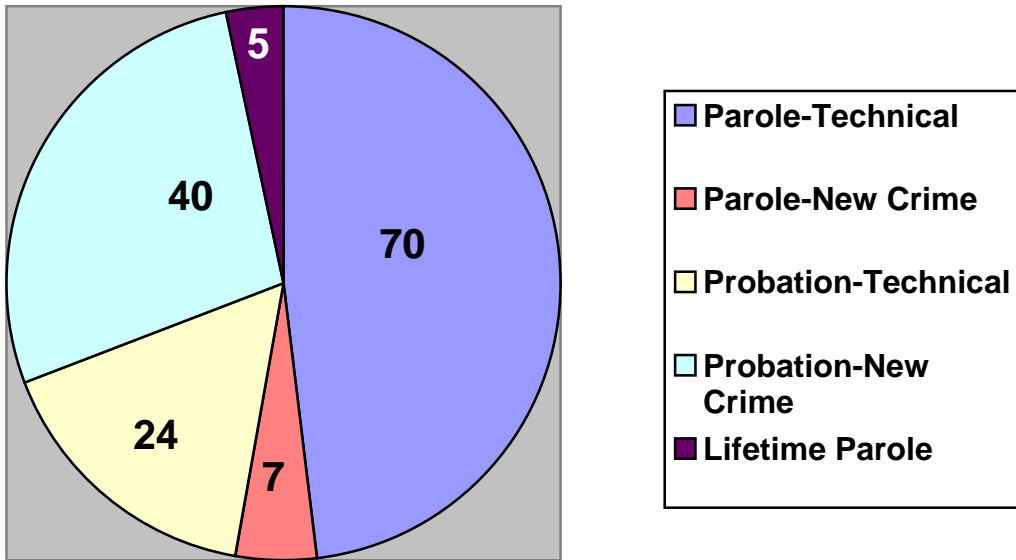
Incarceration Rates by Security Level



Violations of Release Conditions

| | Females | Males | Total |
|---------------------------------|----------------|--------------|--------------|
| Parole Violation-Technical | 14 | 56 | 70 |
| Parole Violation-New Offense | 2 | 5 | 7 |
| Lifetime Parole-Technical | 0 | 5 | 5 |
| Probation Violation-Technical | 6 | 18 | 24 |
| Probation Violation-New Offense | 6 | 34 | 40 |

Violations of Release Conditions



| Reasons for Parole Violation | N |
|--|----------|
| Crime on Parole | 7 |
| Drug or Alcohol Use | 39 |
| Program Failure | 30 |
| Failure to Report | 4 |
| Whereabouts Unknown* | 9 |
| Irresponsible Conduct | 5 |
| Associate with Known Felons | 14 |
| Failure to Find or Maintain Employment | 5 |
| Change Residence | 5 |
| Nonpayment of Supervision Fee | 2 |
| Other | 11 |

Most revocation forms list more than one reason.

***Note: Parolees do not receive credit for time they were "whereabouts unknown".**

| Parole Program Failures | N |
|--------------------------------|----------|
| Foundation House | 9 |
| Gandara Residential | 4 |
| OCC | 4 |
| Salvation Army | 2 |
| Bridge House | 1 |
| Serenity House | 1 |
| Opportunity House | 1 |
| Sumner House | 1 |
| Phoenix House | 1 |
| Jeremiah's Inn | 1 |
| Joshua & Deborah House | 1 |
| Lowell House | 1 |
| Women & Children's Program | 1 |
| Breath of Life Program | 1 |
| Community Health Link Respite | 1 |

Special Reentry Populations

DOC Reentry Class at Release

| | <u>Females</u> | <u>Males</u> |
|------------------|----------------|--------------|
| Day Reporting | 1 | 11 |
| Minimum | 9 | 6 |
| Pre/Work Release | 1 | 17 |
| CRU | 0 | 14 |
| WMCAC | 0 | 3 |
| Medium Reentry | <u>0</u> | <u>8</u> |
| TOTAL | 11 | 59 |

DOC Recidivism

| | <u>Females</u> | | <u>Males</u> | | <u>Total</u> | |
|--------------------|----------------|-----|--------------|------|--------------|------|
| | N | % | N | % | N | % |
| New Offense | | | | | | |
| Arrestment | 1 | 9.1 | 16 | 27.1 | 17 | 24.3 |
| Conviction | 0 | 0.0 | 4 | 6.8 | 4 | 5.7 |
| Incarceration | 0 | 0.0 | 1 | 1.7 | 1 | 1.4 |

Technical Violations **None**

Disposition of New Cases

| | |
|---------------------------|---|
| Open-Awaiting Disposition | 9 |
| Dismissed/Not Pros | 4 |
| Guilty-Filed | 2 |
| Suspended Sentence | 1 |
| Committed | 1 |

Bureau of Prisons Class at Release

| | <u>Females</u> | <u>Males</u> |
|------------------|----------------|--------------|
| Day Reporting | 2 | 14 |
| Pre/Work Release | 0 | 7 |
| Medium Reentry | <u>0</u> | <u>3</u> |
| TOTAL | 2 | 24 |

BOP Recidivism

5 males have been arraigned for a new crime. Two cases were dismissed, 1 was filed and 2 are awaiting disposition.

**SECTION II
THREE-YEAR RECIDIVISM RATES
2010 RELEASES**

**THREE-YEAR RECIDIVISM ANALYSES
2010 RELEASES**

| 2010 Recidivism Rates | Females | | Males | | Total | |
|------------------------------|----------------|----------|--------------|----------|--------------|----------|
| | N | % | N | % | N | % |
| New Offense | | | | | | |
| Arrestment | 117 | 45.5 | 1019 | 61.9 | 1136 | 59.7 |
| Conviction | 83 | 32.3 | 731 | 44.4 | 814 | 42.8 |
| Incarceration | 59 | 23.0 | 546 | 33.2 | 605 | 31.8 |
| Technical Violation | 35 | 13.6 | 134 | 8.1 | 169 | 8.9 |

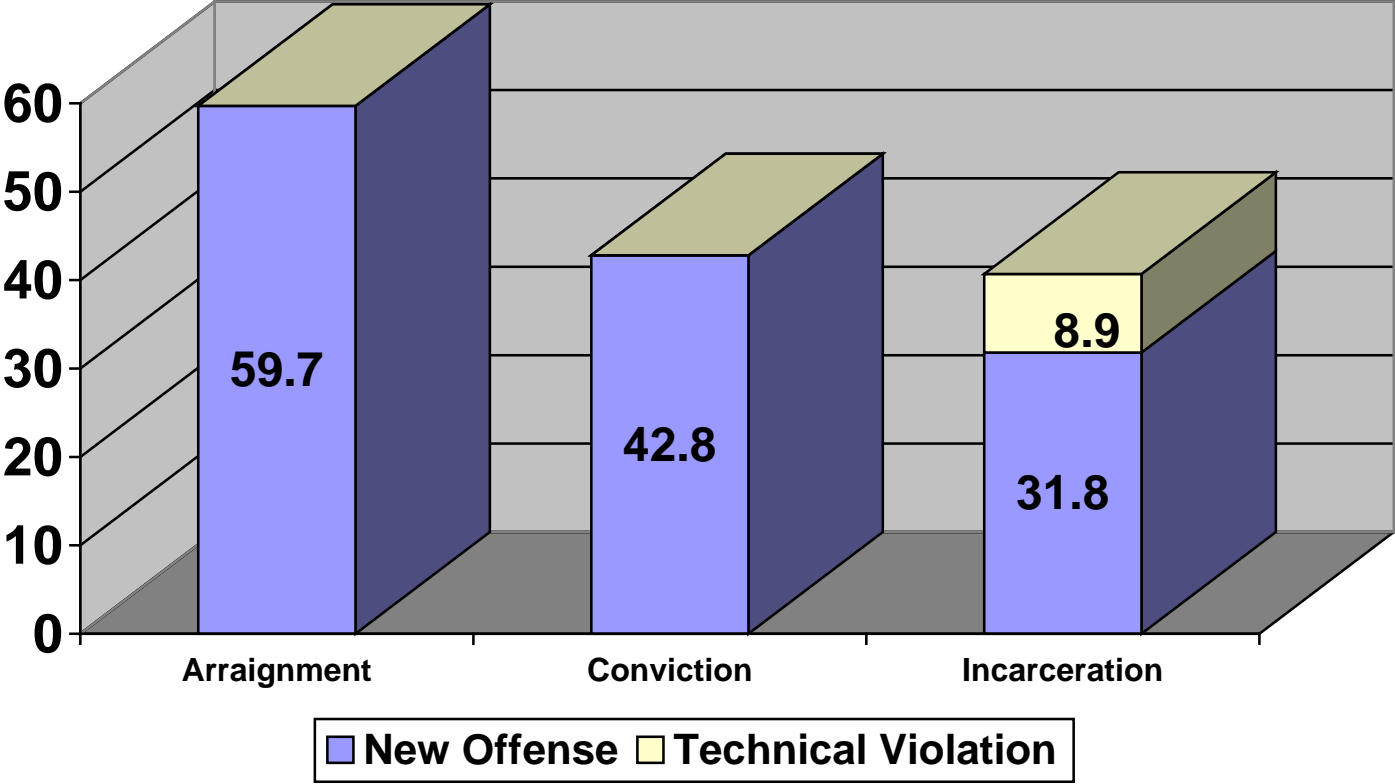
By the end of the third year post-release, 31.8% of offenders had been reincarcerated for a new offense, virtually unchanged from the previous year. The 8.9% technical violation rate increased significantly, driven primarily by a rise in parole violations. The total reincarceration rate was 40.7%.

Time to New Arrestment (% of Arrestments & Violation Hearings)

| First Year | N | % | Second Year | N | % | Third Year | N | % |
|-------------------|------------|------------|--------------------|-----------|------------|-------------------|-----------|------------|
| 0-3 months | 311 | 23.8 | 12-15 months | 91 | 7.0 | 24-27 months | 53 | 4.1 |
| 3-6 months | 274 | 21.1 | 15-18 months | 72 | 5.5 | 27-30 months | 27 | 2.1 |
| 6-9 months | 175 | 13.4 | 18-21 months | 65 | 5.0 | 30-33 months | 26 | 1.9 |
| 9-12 months | <u>126</u> | <u>9.6</u> | 21-24 months | <u>52</u> | <u>4.0</u> | 33-36 months | <u>32</u> | <u>2.5</u> |
| Year Totals | 886 | 67.9 | | 280 | 21.5 | | 138 | 10.6 |

68% of new arrestments occur in the first year post release, another 21% in the second year and 11% in the third year.

2010 Three-Year Recidivism Rates



Re-incarceration Rates by Classification & Year of Offense

| | # Released | First Year* | | Second Year | | Third Year | | Total | |
|------------------------|------------|-------------|------|-------------|------|------------|-----|-------|------|
| | | N | % | N | % | N | % | N | % |
| Day Reporting | 231 | 55 | 23.8 | 26 | 11.3 | 16 | 5.9 | 97 | 42.0 |
| Minimum/PRC | 202 | 46 | 22.8 | 15 | 7.4 | 9 | 5.9 | 70 | 34.7 |
| Community Reentry Unit | 361 | 58 | 16.1 | 56 | 15.5 | 29 | 6.2 | 143 | 39.6 |
| Medium/Maximum | 699 | 176 | 25.2 | 93 | 13.3 | 45 | 7.5 | 314 | 44.9 |
| WMCAC | 411 | 67 | 16.3 | 54 | 13.1 | 29 | 5.8 | 150 | 36.5 |

Rates of re-offending drop off significantly in the second and third years post-release. Those released from the Main Institution had the highest recidivism rate and Minimum/PRC had the lowest.

Re-incarceration Rates by Classification & Return Type

| | # Released | New Offense | | Technical | |
|------------------------|------------|-------------|------|-----------|------|
| | | N | % | N | % |
| Day Reporting | 231 | 61 | 26.4 | 36 | 15.6 |
| Minimum/PRC | 202 | 48 | 23.8 | 22 | 10.9 |
| Community Reentry Unit | 361 | 133 | 36.8 | 10 | 2.8 |
| Medium/Maximum | 699 | 252 | 36.0 | 62 | 8.9 |
| WMCAC | 411 | 111 | 27.0 | 39 | 9.5 |

Those released from the MI and the CRU were most likely to be re-incarcerated for a new offense by the end of the third year post release. Those released from WMCAC, Day Reporting and PRC had higher parole rates, which lead to higher reincarceration rates for technical violations.

| Re-incarceration Rates by Release Type & Reason for Return | N | % |
|---|------------|-------------|
| Wrapped (N=1453) | | |
| Technical Violation of Probation | 57 | 3.9 |
| Technical Violation of Lifetime Supervision | 5 | 0.3 |
| New Offense | 502 | 34.5 |
| Total | 564 | 38.7 |
| Paroled (N=451) | | |
| Technical Violation of Parole | 98 | 21.7 |
| Technical Violation of Probation | 9 | 2.0 |
| New Offense on Parole | 19 | 4.2 |
| Technical Violation of Lifetime Supervision | 0 | 0.0 |
| New Offense after Parole | 84 | 18.6 |
| Total | 210 | 46.5 |

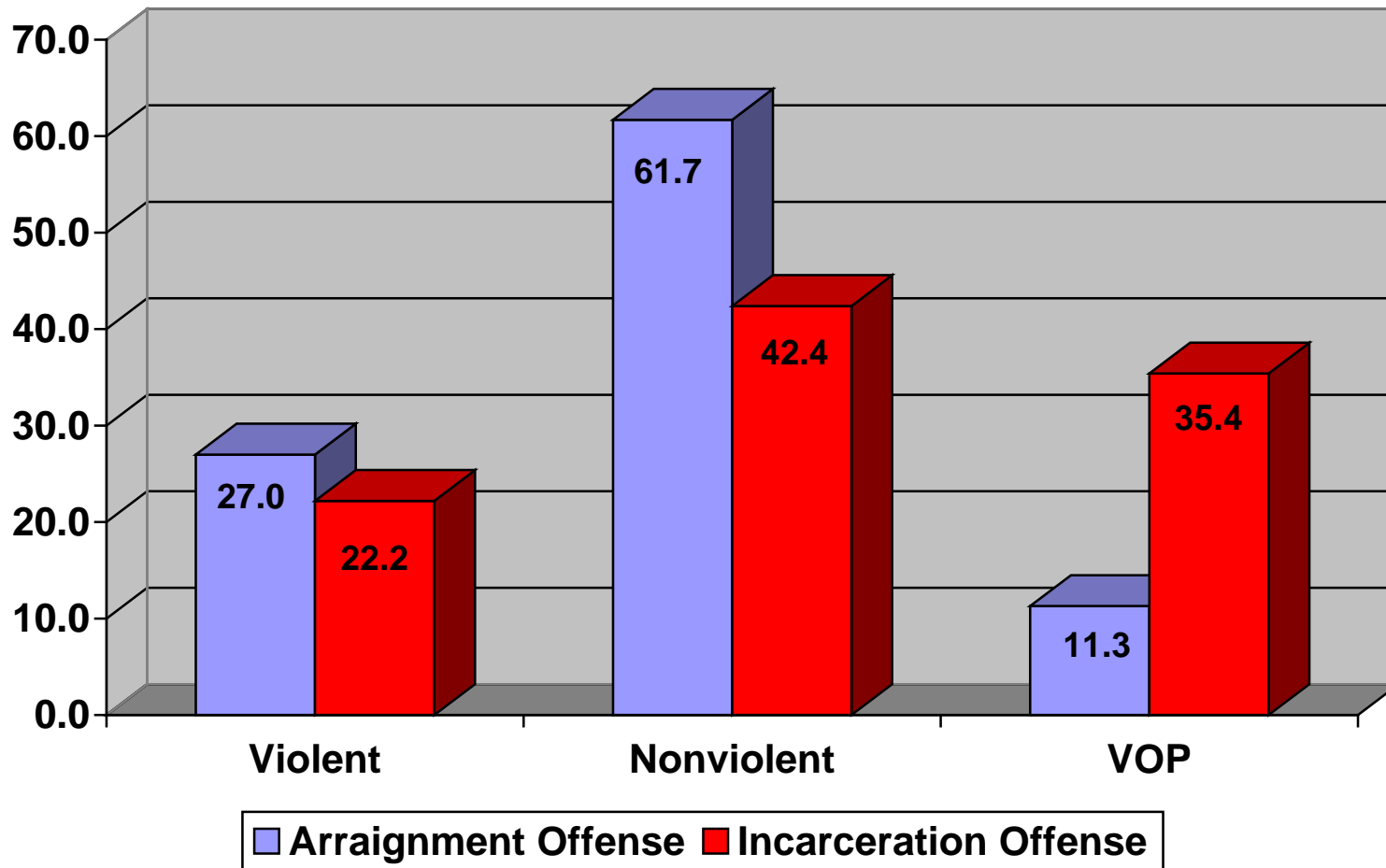
Only 22.8% of parolees committed a new offense compared to 38.7% of those who wrapped up their sentence. Technical violations of parole increased 6 percentage points from the previous year.

| New Arraignment Offense | Females | | Males | | Totals | |
|-----------------------------------|----------------|-------------|--------------|-------------|---------------|-------------|
| | N | % | N | % | N | % |
| Person | 21 | 13.8 | 239 | 20.7 | | |
| Domestic | 1 | 0.7 | 50 | 4.3 | | |
| Sex Offense | 0 | 0.0 | 27 | 2.3 | | |
| Firearms | 0 | 0.0 | 15 | 1.3 | | |
| Total Violent Offenses | 22 | 14.5 | 331 | 28.6 | 353 | 27.0 |
| Property | 40 | 26.3 | 257 | 22.3 | | |
| Drugs | 22 | 14.5 | 137 | 11.9 | | |
| Motor Vehicle | 17 | 11.2 | 269 | 23.3 | | |
| Prostitution | 21 | 13.8 | 0 | 0.0 | | |
| Others | 4 | 2.6 | 38 | 3.3 | | |
| Total Nonviolent Offenses | 104 | 68.4 | 701 | 60.8 | 805 | 61.7 |
| Parole Violation-Technical | 16 | 10.5 | 88 | 7.6 | | |
| Probation Violation-Technical | 10 | 6.6 | 33 | 2.9 | | |
| Total Technical Violations | 26 | 17.1 | 121 | 10.5 | 147 | 11.3 |

| New Incarceration Offense | Females | | Males | | Totals | |
|---|----------------|-------------|--------------|-------------|---------------|-------------|
| | N | % | N | % | N | % |
| Person | 9 | 9.6 | 118 | 17.4 | | |
| Domestic | 0 | 0.0 | 24 | 3.5 | | |
| Sex Offense | 0 | 0.0 | 3 | 0.4 | | |
| Firearms | 0 | 0.0 | 18 | 2.6 | | |
| Total Violent Offenses | 9 | 9.6 | 163 | 23.9 | 172 | 22.2 |
| Property | 16 | 17.0 | 144 | 21.2 | | |
| Drugs | 6 | 6.4 | 95 | 14.0 | | |
| Motor Vehicle | 3 | 3.2 | 44 | 6.5 | | |
| Prostitution | 12 | 12.8 | 0 | 0.0 | | |
| Others | 2 | 2.1 | 6 | 0.9 | | |
| Total Nonviolent Offenses | 39 | 41.5 | 289 | 42.6 | 328 | 42.4 |
| Parole Violation | 19 | 20.2 | 101 | 14.9 | | |
| Probation Violation | 27 | 28.7 | 127 | 18.7 | | |
| Violations of Release Conditions | 46 | 48.9 | 228 | 33.6 | 274 | 35.4 |

Those arraigned for a violent offense were most likely to be incarcerated for that offense. This is especially true for men. A nonviolent offense, however, often resulted in a violation of parole or probation. Sixty-two percent of new arraignments were for nonviolent offenses, but only 42% of new incarcerations. Violations represent only 11% of arraignments, but over 35% of incarcerations.

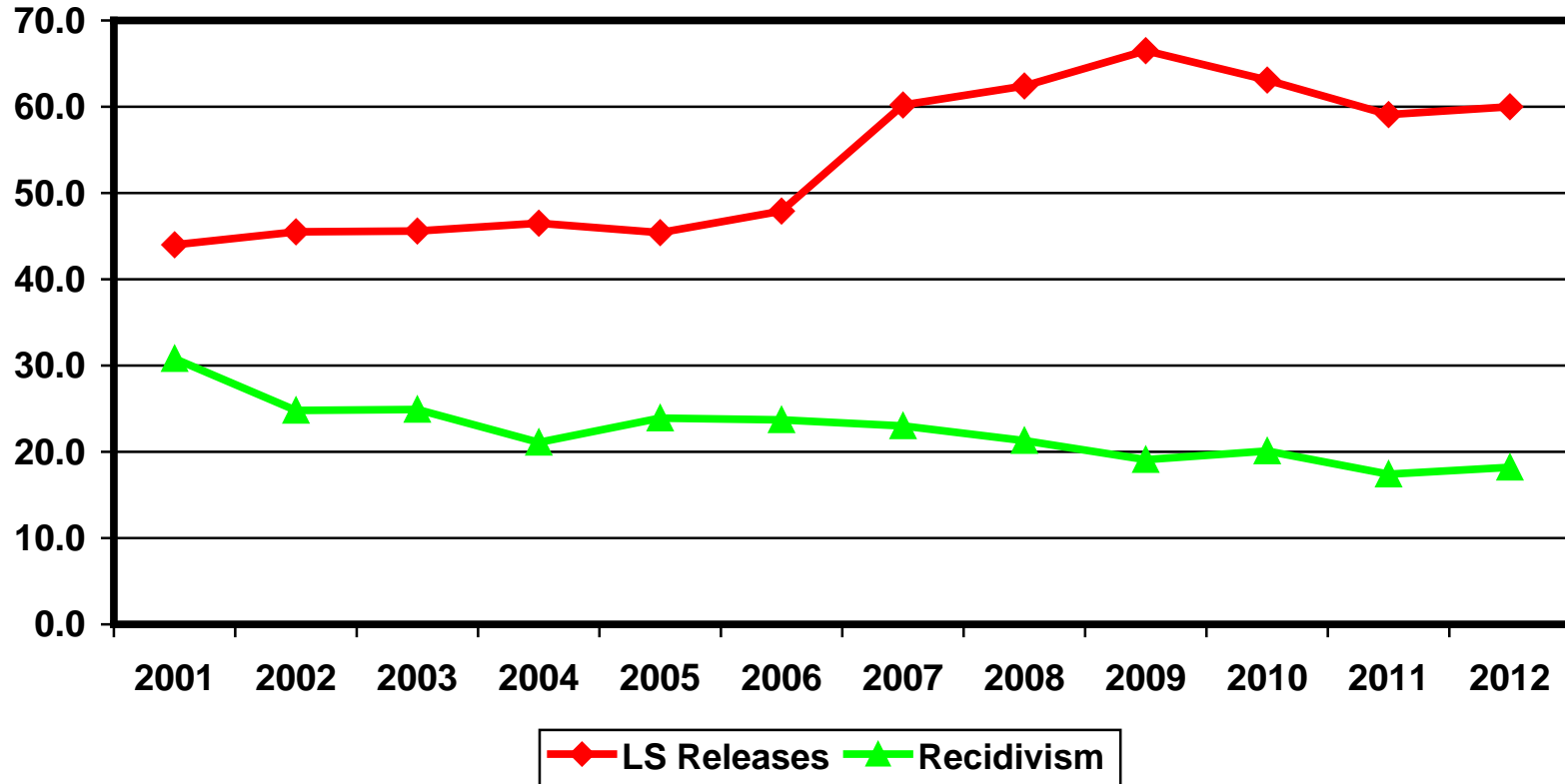
Arrestment & Incarceration Offenses



RECIDIVISM SUMMARY

2000 - 2012

Lower Security Releases & One-Year Reincarceration Rates



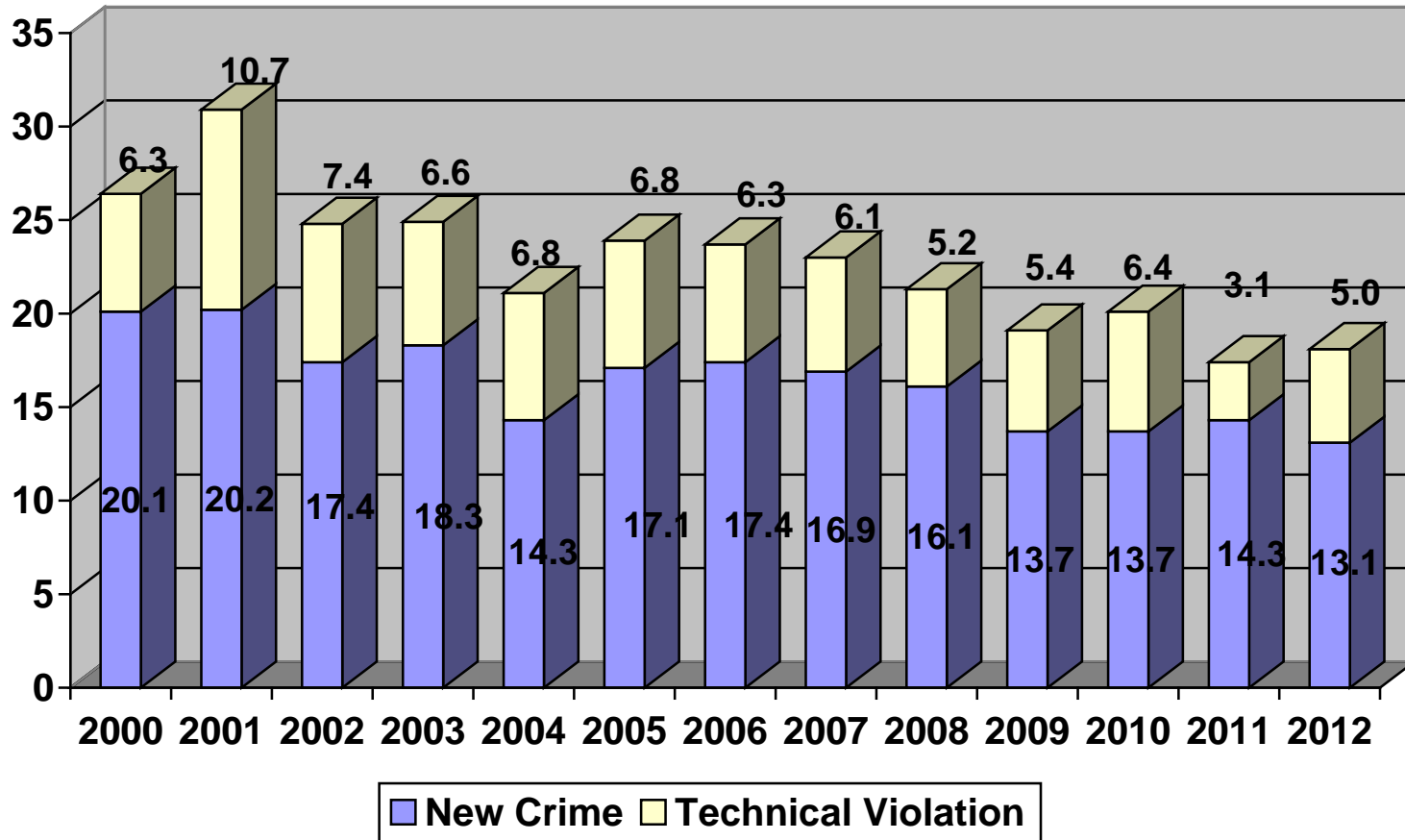
ONE-YEAR RE-INCARCERATION RATES

| YEAR | Number New Released | Offense | Technical Violation | TOTAL |
|-------------|----------------------------|----------------|----------------------------|--------------|
| 2000 | 2174 | 20.1 | 6.3 | 26.4% |
| 2001 | 2270 | 20.2 | 10.7 | 30.9% |
| 2002 | 2470 | 17.4 | 7.4 | 24.8% |
| 2003 | 2321 | 18.3 | 6.6 | 24.9% |
| 2004 | 2298 | 14.3 | 6.8 | 21.1% |
| 2005 | 2434 | 17.1 | 6.8 | 23.9% |
| 2006 | 2627 | 17.4 | 6.3 | 23.7% |
| 2007 | 2468 | 16.9 | 6.1 | 23.0% |
| 2008 | 2362 | 16.1 | 5.2 | 21.3% |
| 2009 | 2197 | 13.7 | 5.4 | 19.1% |
| 2010 | 1907 | 13.7 | 6.4 | 20.1% |
| 2011 | 1718 | 14.3 | 3.1 | 17.4% |
| 2012 | 1966 | 13.1 | 5.0 | 18.1% |

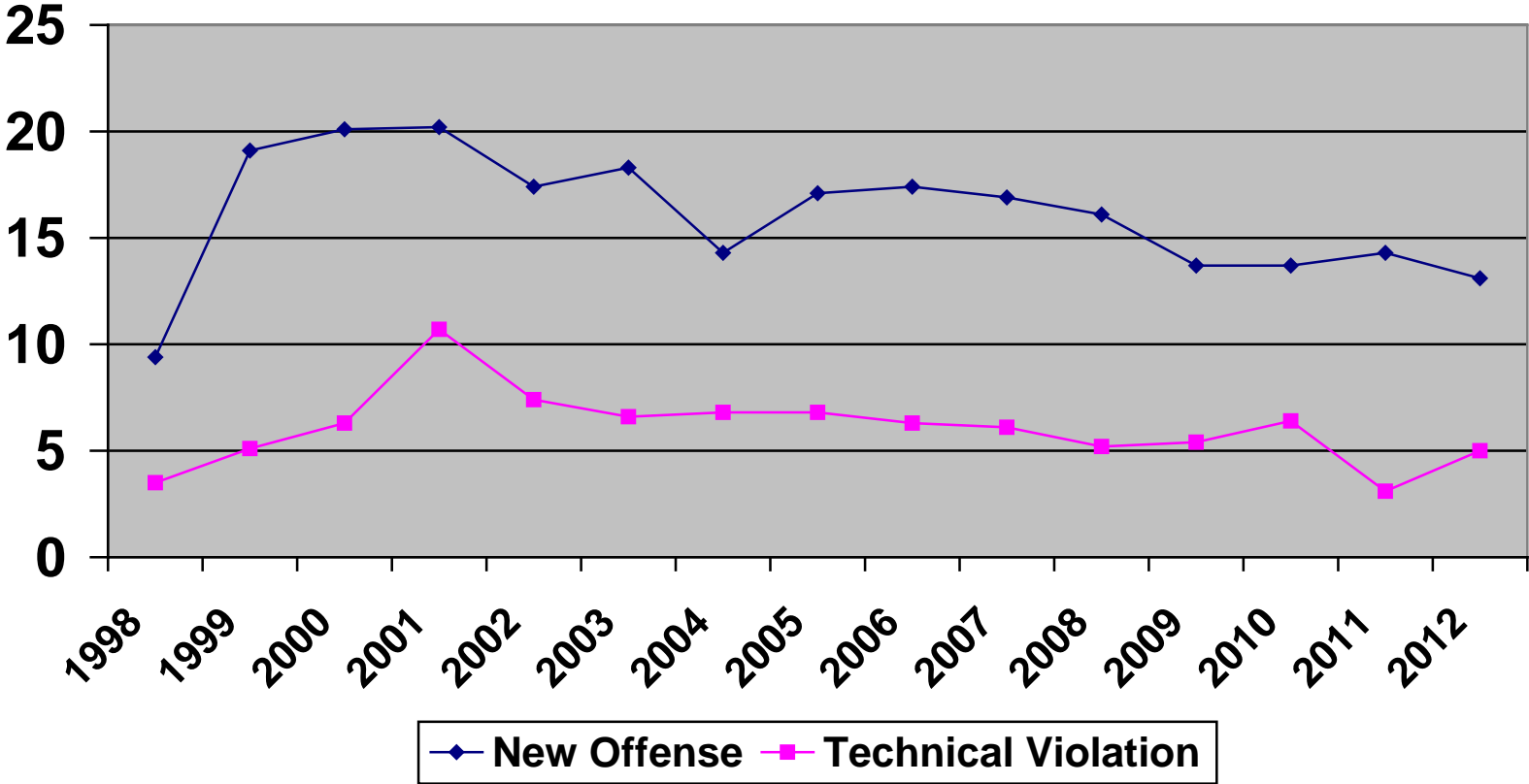
THREE-YEAR RE-INCARCERATION RATES

| YEAR | New Offense | Technical Violation | TOTAL |
|-------------|--------------------|----------------------------|--------------|
| 2000 | 42.5 | 6.3 | 48.8% |
| 2001 | 38.6 | 10.8 | 49.4% |
| 2002 | 38.8 | 7.5 | 46.3% |
| 2003 | 36.9 | 7.6 | 44.5% |
| 2004 | 37.0 | 7.1 | 44.1% |
| 2005 | 38.4 | 7.4 | 45.8% |
| 2006 | 36.8 | 8.4 | 45.2% |
| 2007 | 34.1 | 6.9 | 41.0% |
| 2008 | 33.0 | 6.8 | 39.8% |
| 2009 | 31.7 | 7.4 | 39.1% |
| 2010 | 31.8 | 8.9 | 40.7% |

One-Year Re-incarceration Rates 2000-2012



One-Year New Offense & Technical Violation Rates



Three-Year Recidivism Rates

| | 2002 | 2003 | 2004 | 2005 | 2006 | 2007 | 2008 | 2009 | 2010 |
|-----------------------|-------------|-------------|-------------|-------------|-------------|-------------|-------------|-------------|-------------|
| | % | % | % | % | % | % | % | % | % |
| New Offense | | | | | | | | | |
| Arraigned | 65.6 | 63.9 | 63.3 | 62.6 | 62.7 | 62.9 | 60.5 | 61.8 | 59.7 |
| Convicted | 47.7 | 47.5 | 47.0 | 48.1 | 47.8 | 46.4 | 45.3 | 44.8 | 42.8 |
| Incarcerated | 38.8 | 36.9 | 37.1 | 38.4 | 36.8 | 34.1 | 33.0 | 31.7 | 31.8 |
| Tech Violation | 7.4 | 7.6 | 7.2 | 7.3 | 8.4 | 6.9 | 6.8 | 7.4 | 8.9 |

Recidivism rates for new crimes are at a ten-year low. Three years after release, ***more than 40% of 2010 releases remained crime-free***, and ***67% had not been re-incarcerated for a new crime***. Technical violations rose somewhat, driven by an increase in parole rates. The overwhelming majority of paroles continue to be from WMCAC or Day Reporting.

Three-Year Recidivism Rates 2002-2010

